

Collecting Matisse and Modern Masters

The Cone Sisters of Baltimore *May 26– September 30, 2012*



cone_01 - Henri Matisse, *Etta Cone (VI/VI)*, 1931-1934, charcoal with stumping, The Baltimore Museum of Art: The Cone Collection, formed by Dr. Claribel Cone and Miss Etta Cone of Baltimore, Maryland, BMA



cone_02 - Henri Matisse, *Resting Woman Wearing Tiara*, 1936, pen and black ink, The Baltimore Museum of Art: The Cone Collection, formed by Dr. Claribel Cone and Miss Etta Cone of Baltimore, Maryland, BMA



cone_03 - Henri Matisse, *Large Odalisque with Striped Pantaloons*, 1925, crayon transfer lithograph with scraping, The Baltimore Museum of Art: The Cone Collection, formed by Dr. Claribel Cone and Miss Etta Cone of Baltimore, Maryland, BMA



cone_04 - Pablo Picasso, *La Coiffure*, 1906, pen and brown ink with brush and brown wash, The Baltimore Museum of Art: The Cone Collection, formed by Dr. Claribel Cone and Miss Etta Cone of Baltimore, Maryland, BMA

PLEASE NOTE: Images may not be cropped or altered. In accordance with the Canadian Copyright Act, these images may only be reproduced for the purposes of criticism, review or news reporting in conjunction with the exhibition, and must be accompanied by the appropriate credit line, including all copyright and trademark symbols. The Vancouver Art Gallery will not be held liable for any unauthorized use of this material.

TO DOWNLOAD IMAGES:

ftp://ftp.vanartgallery.bc.ca/MEDIA/Cone_Collection/

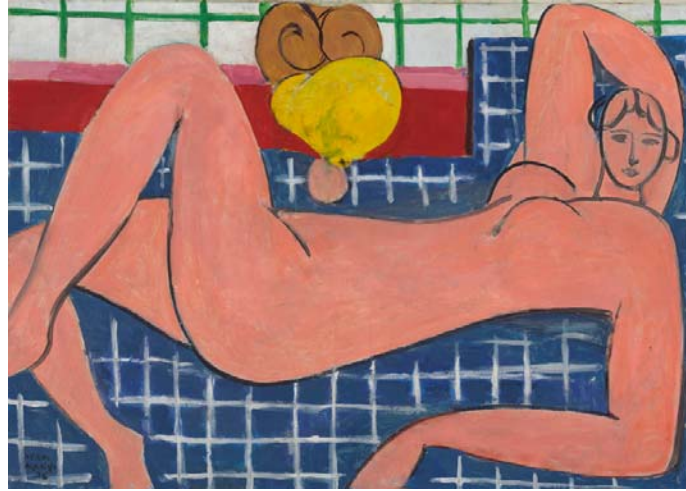
username: ftp2-vag password: rasshumGi6

Contact: Carolyn Jack, cjack@vanartgallery.bc.ca

Vancouver
Artgallery



cone_05 - Pablo Picasso, *Self-Portrait (Bonjour Mlle Cone)*, 1907, pen and brown ink, The Baltimore Museum of Art: The Cone Collection, formed by Dr. Claribel Cone and Miss Etta Cone of Baltimore, Maryland, BMA © Picasso Estate / SODRAC, (2012)



cone_06 - Henri Matisse, *Large Reclining Nude*, 1935, oil on canvas, The Baltimore Museum of Art: The Cone Collection, formed by Dr. Claribel Cone and Miss Etta Cone of Baltimore, Maryland, BMA



cone_07 - Henri Matisse, *Striped Robe, Fruit, and Anemones*, 1940, oil on canvas, The Baltimore Museum of Art: The Cone Collection, formed by Dr. Claribel Cone and Miss Etta Cone of Baltimore, Maryland, BMA



cone_08 - Henri Matisse, *Interior, Flowers and Parakeets*, 1924, oil on canvas, The Baltimore Museum of Art: The Cone Collection, formed by Dr. Claribel Cone and Miss Etta Cone of Baltimore, Maryland, BMA



cone_09 - Pablo Picasso, *Woman with Bangs*, 1902, oil on canvas, The Baltimore Museum of Art: The Cone Collection, formed by Dr. Claribel Cone and Miss Etta Cone of Baltimore, Maryland, BMA. © Picasso Estate / SODRAC, (2012)



cone_10 - Vincent Van Gogh, *Landscape with Figures*, 1889, oil on canvas, The Baltimore Museum of Art: The Cone Collection, formed by Dr. Claribel Cone and Miss Etta Cone of Baltimore, Maryland, BMA



cone_11 - Pierre-Auguste Renoir, *Washerwomen*, c. 1888, oil on canvas, The Baltimore Museum of Art: The Cone Collection, formed by Dr. Claribel Cone and Miss Etta Cone of Baltimore, Maryland, BMA



cone_12 - Paul Gauguin, *Vahine no te vi (Woman of the Mango)*, 1892, oil on canvas, The Baltimore Museum of Art: The Cone Collection, formed by Dr. Claribel Cone and Miss Etta Cone of Baltimore, Maryland, BMA



cone_13 - Pablo Picasso, *Woman Plaiting Her Hair (Fernande)*, original model 1906; this cast before 1940, bronze, The Baltimore Museum of Art: The Cone Collection, formed by Dr. Claribel Cone and Miss Etta Cone of Baltimore, Maryland, BMA © Picasso Estate / SODRAC, (2012)



cone_14 - Claribel Cone, Gertrude Stein and Etta Cone, *Settignano, Italy*, June 26, 1903. Dr. Claribel and Miss Etta Cone Papers, Archives and Manuscripts Collections, The Baltimore Museum of Art.



cone_15 - Front room, Claribel Cone's apartment (8B), Marlborough Apartments, Baltimore, Maryland, 1941. Dr. Claribel and Miss Etta Cone Papers, Archives and Manuscripts Collections, The Baltimore Museum of Art.



cone_16 - Claribel Cone as a resident physician, Blockley Almshouse, Philadelphia, circa 1891-1892, Gilbert Studios, Philadelphia, PA. Dr. Claribel and Miss Etta Cone Papers, Archives and Manuscripts Collections, The Baltimore Museum of Art.



cone_17 - Etta Cone wearing a riding habit, circa 1889, Bachrach Bros. Dr. Claribel and Miss Etta Cone Papers, Archives and Manuscripts Collections, The Baltimore Museum of Art.